

PMSM HVLS FAN

ABOUT US

RR Global, a USD 1.25 Billion conglomerate is one of the most prominent names in the electrical industry. With innovation being at the core of our offerings, we cater to a varied range of product categories including Cables & Wires, LED Lighting, Switches, Switchgears, HVLS Fans & more. We have grown exponentially over the past four decades and are today present in more than 90 plus countries. Innovation is one of our prominent brand ethos. All our products are of the highest international quality standards and are internationally certified with IEC, CE, CB, Intertek to name a few.

RR Global's vast range of products, cutting-edge technology, and international quality caters products to every industry and every market. With our products, we always strive to create a safe and reliable environment for our customers. Our brand ethos of quality, innovation, and trust makes us the trusted choice for customers not only in India but across the globe.

CONCEPT

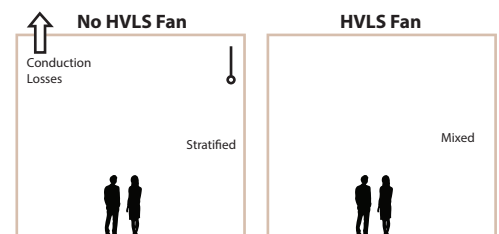
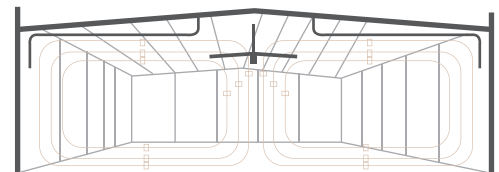
The air produced from a HVLS fan moves towards the floor in a column that radiates in all direction, flowing horizontally until it reaches a wall – or the airflow from another fan – at which stage the air flow turns upwards and flows back towards the fan. This creates convection like air current that builds as the fan continues to spin. The increased air circulation effectively removes hot, humid air and replaces it with drier air. This process allows for a complete mixing of air in the atmosphere resulting in a temperature drop of 3 to 5 degrees, depending on the season.

RR PMSM HVLS FAN

Permanent Magnet Synchronous Motorised HVLS Fan series from RR has been conceptualized and developed at our in-house R&D centre. It has a light and stylish design with the fan blades made from aviation grade aluminum that makes them stronger and more efficient. The winglets help in reducing air resistance and noise, reaching optimal silent performance at low speeds. Our PMSM HVLS Fan is certified with ISO 9001:2015 and made using only world class industrial grade components and spare parts of the highest quality. We ensure the most efficient and reliable fan for you to use.



	HVLS FAN	WALL FAN
Fan Diameter (m)	7.3	0.75
Power (kW)	1.5	0.36
Air Flow (m ³ /min)	13000	300
Effective Area (m ²)	1500	30
Factory Area	9000	9000
Total Units Installed	6	300
Total kW Installed	9	100
Consumption Year @10Hrs/day @26 days/mth	28080	336960



ADVANTAGES OF RR PMSM HVLS



LOW SPEED



LIGHT WEIGHT



SILENT DESIGN



PMSM MOTOR



ENERGY SAVING

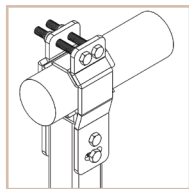


MAINTENANCE FREE

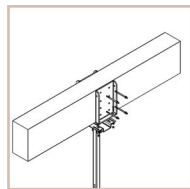
TECHNICAL SPECIFICATION

	PMSM					
Model	PH-V05R-8	PH-V05R-10	PH-V05R-12	PH-V06R-16	PH-V06R-20	PH-V06R-24
Diameter	8	10	12	16	20	24
Input Power	Single Phase 230 Volt, 50 Hz					
Blade Material	Aviation Grade Extruded Aluminium Alloy 6063 -T3					
No. of Blade	5					
Nominal Fan Weight (Kg)	43	46	49	84	89	95
Power (W)	200	275	350	600	800	950
RPM (Rated)	110	100	95	80	65	55
Area Coverage (Sq. Ft)	4000	5500	7000	10000	13500	18500
Floor to fan blade height (Ft)	12-15 ft	14-17 ft	16-18 ft	18-22 ft	22-27 ft	27-30 ft
Sound Level	45--50 dB					
Blade Clearance from ceiling	3-4 Ft					
Max Air Flow (CFM)	136000	150000	164000	220000	280000	380000

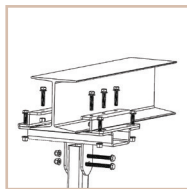
SAFETY OF RR PMSM HVLS



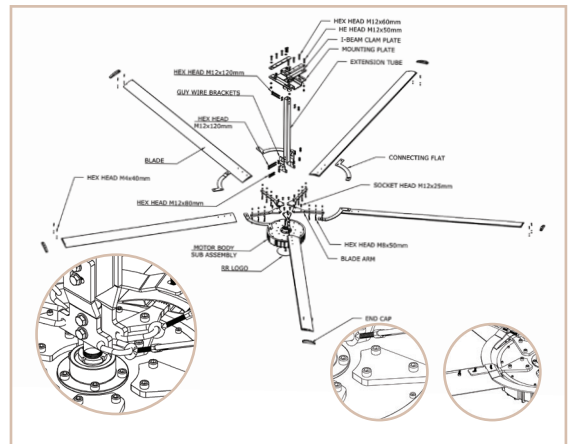
ROUND PIPE MOUNTING



CEILING MOUNTING



I-BEAM MOUNTING



APPLICATIONS



MANUFACTURING UNITS



SHOPPING MALL



RAILWAY TERMINALS



RELIGIOUS TERMINALS



COW SHEED /POULTRY



BUS TERMINALS



WARE HOUSE



FOOD COURT



AIR PORT



GYMNASIUM



R R KABEL LIMITED

Regd. Office : Ram Ratna House, Utopia City, P. B. Marg, Worli, Mumbai - 400 013.

T: +91 - 22 - 2494 9009 / 2492 4144 • **F:** +91 - 22 - 2491 2586 • **E:** mumbai.rrkabel@rrglobal.com

Survey No. 142/2, Madhuban Dam Road, Rakholi, Village Karad, Silvassa - 396240. India.

T: +91 - 7228 012 928 • **E:** hvls.support@rrglobal.com

www.rrglobal.com

The information & technical data mentioned in this brochure is true, complete and correct. However, the technical data could vary from time to time, hence, current details should always be checked with RR Global for accuracy.